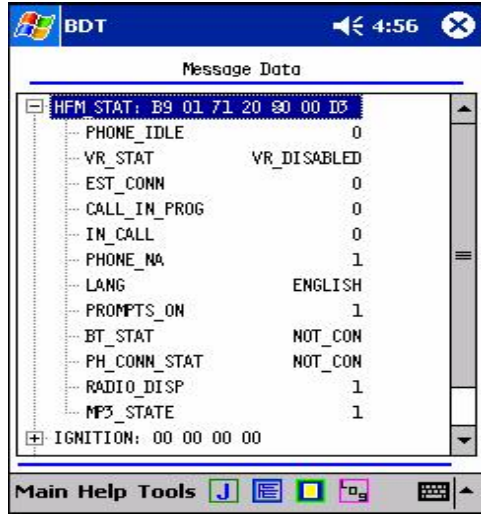


Bluetooth Diagnostic Tool



Overview

The Bluetooth Diagnostic Tool (BDT) is designed to perform a Go/No Go test with a Hands Free Module (HFM) running in vehicles with CAN B, CAN C, or J1850 bus systems. The BDT provides a set of diagnostic functions such as trouble code retrieval, module data retrieval, and HFM re-flash file transfer over a Bluetooth wireless link. The BDT can also act as a phone simulator or a bus monitor tool for providing HFM status information in a message display window.

The BDT utilizes an iPAQ™ PDA with an external Bluetooth compact flash (CF) card and serial CAN/J1850 bus interface module (SJC) with appropriate interface cables. Power is supplied from the vehicle diagnostic connector to the iPAQ™ via a regulator integrated into the SJC. An iPAQ™ rugged case is supplied to help prevent damage.

Benefits

The BDT simplifies the process of debugging an HFM system with an easy to learn and use PDA touch screen system. Color displays are used to quickly denote go and no-go conditions. Detailed message displays and diagnostic session logging enables the user to quickly determine and document HFM system faults. The highly portable tool is convenient to transport and use within a vehicle. The PDA is also a valuable general purpose tool for storing other detailed information related to vehicle system troubleshooting.

DGE INC.

2870 Technology Drive Rochester Hills, MI 48309

Email: sales@dgeinc.com Phone: 248.293.1300 Fax: 248.293.1309

Available Test Features

The HFM performs the following test functions:

- Go/No Go Tests
 - Ignition On Test
 - Radio Test
 - Module Data Test
 - DTC Test
 - Pair Test
 - BT Link Test
 - Dial Test
 - Ignition On Audio Test
 - Ignition Off Test
 - Keep Alive Audio Test
 - Power Down Test
 - Test Summary
- Pair to HFM
- Phone Simulation
- Diagnostics
 - Retrieve HFM Module Data
 - Retrieve DTC History from HFM
 - Clear DTC codes from HFM
 - Reflash HFM

A Message Data screen is provided to display bus messages including both raw hex data and signal level data. This eliminates the need to for the user to carry bulky documents describing each signal embedded in vehicle messages. An example of this display is shown above.

Included Items

Each BDT is shipped with the following items:

- iPAQ™ 3870 PDA
- SJC Bus Interface Module
- Interconnecting Cables
- Bluetooth Compact Flash Card
- iPAQ™ CF Expansion Sleeve
- iPAQ™ Rugged Case and Targus Carrying Case
- Users Manual and S/W CD-ROM

™ - Compaq Corporation